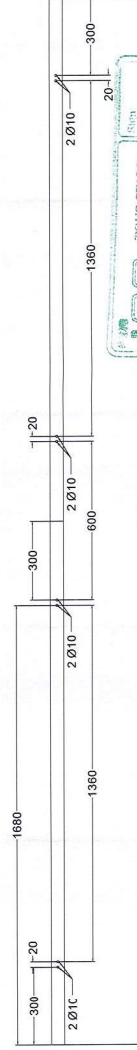
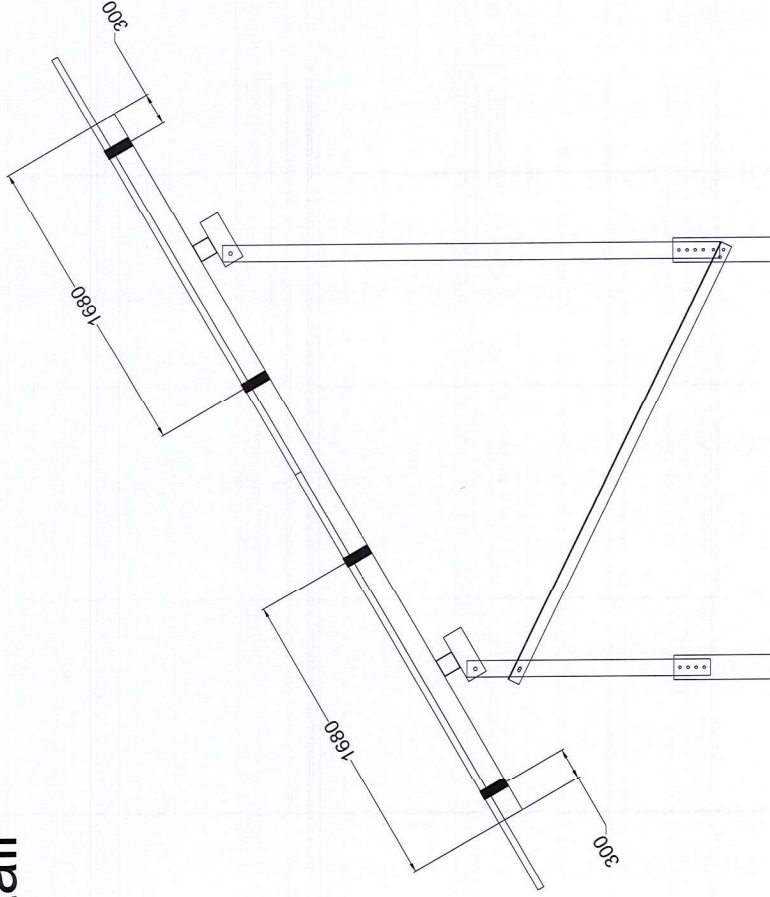


SECTION A_A

[illegible]

Rafter Detail



REV	DATE	DESCRIPTION	DESIGN	CHECKED	APPROVED
00	10/04/2025	FIRST REVISION OF DRAWING	MOHAMMAD SHARAH	MOHAMMAD SHARAH	MOHAMMAD SHARAH
Client: TUIS START CO. CONSULTING ENGINEERS					
Sub-Contractor: MOHAMMAD SHARAH CO.					
Project: 20MW Solar Power Plant (MUTELAT)					
Title:					
<div> <div>DOC NO.:</div> <div>SCALE</div> <div>FIT</div> </div> <div> <div>REV.:</div> <div>OF</div> <div>SHEET</div> </div> <div> <div>18 OF 19</div> <div>FORMAT</div> <div>DWG</div> </div>					

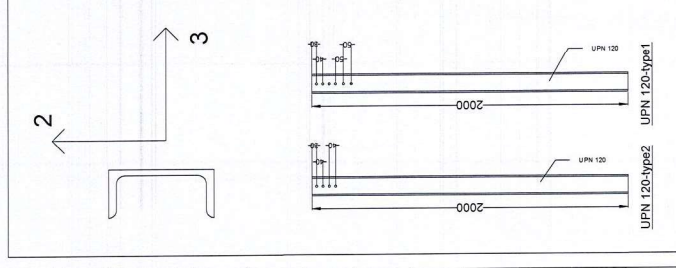
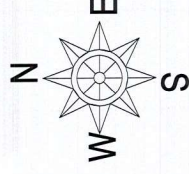
ALL DIMENSIONS ARE IN mm.

LEGEND

KEY PLAN

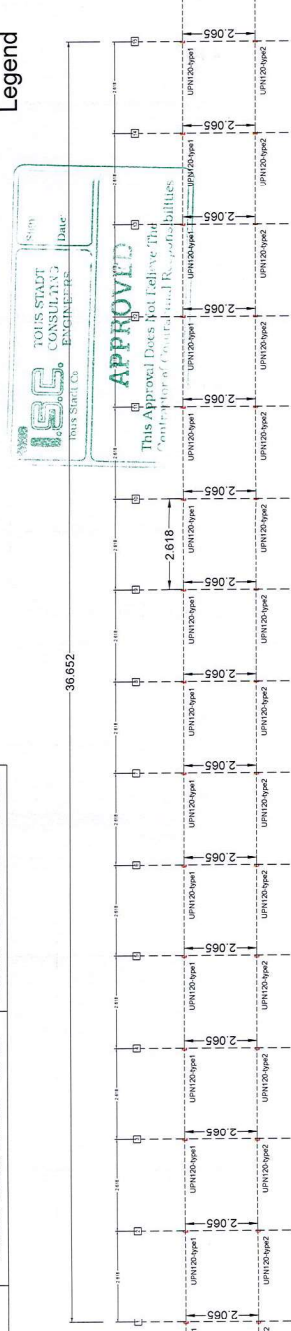
Maximum Pile Forces Plot (Multiplied in S.F., which S.F. equals 2.0)		
Vertical/ Horizontal Axis	A	B
1	Axial Force = 2.8 ton Lateral Force in 2-2 Axis = 0.4 ton Lateral Force in 3-3 Axis = 0.2 ton	Axial Force = 4.0 ton Lateral Force in 2-2 Axis = 2.0 ton Lateral Force in 3-3 Axis = 0.2 ton
2	Axial Force = 2.6 ton Lateral Force in 2-2 Axis = 1.0 ton Lateral Force in 3-3 Axis = 0.2 ton	Axial Force = 4.0 ton Lateral Force in 2-2 Axis = 4.0 ton Lateral Force in 3-3 Axis = 0.2 ton
3	Axial Force = 2.2 ton Lateral Force in 2-2 Axis = 1.0 ton Lateral Force in 3-3 Axis = 0.2 ton	Axial Force = 4.0 ton Lateral Force in 2-2 Axis = 4.0 ton Lateral Force in 3-3 Axis = 0.2 ton
4	Axial Force = 2.2 ton Lateral Force in 2-2 Axis = 1.0 ton Lateral Force in 3-3 Axis = 0.2 ton	Axial Force = 4.0 ton Lateral Force in 2-2 Axis = 4.0 ton Lateral Force in 3-3 Axis = 0.2 ton
5	Axial Force = 2.2 ton Lateral Force in 2-2 Axis = 1.0 ton Lateral Force in 3-3 Axis = 0.2 ton	Axial Force = 4.0 ton Lateral Force in 2-2 Axis = 4.0 ton Lateral Force in 3-3 Axis = 0.2 ton
6	Axial Force = 2.2 ton Lateral Force in 2-2 Axis = 1.0 ton Lateral Force in 3-3 Axis = 0.2 ton	Axial Force = 4.0 ton Lateral Force in 2-2 Axis = 4.0 ton Lateral Force in 3-3 Axis = 0.2 ton
7	Axial Force = 2.2 ton Lateral Force in 2-2 Axis = 1.0 ton Lateral Force in 3-3 Axis = 0.2 ton	Axial Force = 4.0 ton Lateral Force in 2-2 Axis = 4.0 ton Lateral Force in 3-3 Axis = 0.2 ton
8	Axial Force = 2.2 ton Lateral Force in 2-2 Axis = 1.0 ton Lateral Force in 3-3 Axis = 0.2 ton	Axial Force = 4.0 ton Lateral Force in 2-2 Axis = 4.0 ton Lateral Force in 3-3 Axis = 0.2 ton
9	Axial Force = 2.4 ton Lateral Force in 2-2 Axis = 0.8 ton Lateral Force in 3-3 Axis = 0.2 ton	Axial Force = 4.0 ton Lateral Force in 2-2 Axis = 4.0 ton Lateral Force in 3-3 Axis = 0.2 ton
10	Axial Force = 2.4 ton Lateral Force in 2-2 Axis = 1.2 ton Lateral Force in 3-3 Axis = 0.2 ton	Axial Force = 4.0 ton Lateral Force in 2-2 Axis = 4.0 ton Lateral Force in 3-3 Axis = 0.2 ton
11	Axial Force = 2.2 ton Lateral Force in 2-2 Axis = 0.8 ton Lateral Force in 3-3 Axis = 0.2 ton	Axial Force = 4.0 ton Lateral Force in 2-2 Axis = 4.0 ton Lateral Force in 3-3 Axis = 0.2 ton
12	Axial Force = 2.2 ton Lateral Force in 2-2 Axis = 1.0 ton Lateral Force in 3-3 Axis = 0.2 ton	Axial Force = 4.0 ton Lateral Force in 2-2 Axis = 4.0 ton Lateral Force in 3-3 Axis = 0.2 ton
13	Axial Force = 2.2 ton Lateral Force in 2-2 Axis = 1.0 ton Lateral Force in 3-3 Axis = 0.2 ton	Axial Force = 4.0 ton Lateral Force in 2-2 Axis = 4.0 ton Lateral Force in 3-3 Axis = 0.2 ton
14	Axial Force = 2.8 ton Lateral Force in 2-2 Axis = 1.0 ton Lateral Force in 3-3 Axis = 0.2 ton	Axial Force = 4.0 ton Lateral Force in 2-2 Axis = 3.4 ton Lateral Force in 3-3 Axis = 0.2 ton
15	Axial Force = 3.2 ton Lateral Force in 2-2 Axis = 2.2 ton Lateral Force in 3-3 Axis = 0.6 ton	Axial Force = 4.0 ton Lateral Force in 2-2 Axis = 2.2 ton Lateral Force in 3-3 Axis = 0.2 ton

Vertical/ Horizontal Axis	Minimum Piling Depth	
	A	B
1	Minimum piling depth = 1.2 m	Minimum piling depth = 1.5 m
2	Minimum piling depth = 1.2 m	Minimum piling depth = 1.5 m
3	Minimum piling depth = 1.2 m	Minimum piling depth = 1.5 m
4	Minimum piling depth = 1.2 m	Minimum piling depth = 1.5 m
5	Minimum piling depth = 1.2 m	Minimum piling depth = 1.5 m
6	Minimum piling depth = 1.2 m	Minimum piling depth = 1.5 m
7	Minimum piling depth = 1.2 m	Minimum piling depth = 1.5 m
8	Minimum piling depth = 1.2 m	Minimum piling depth = 1.5 m
9	Minimum piling depth = 1.2 m	Minimum piling depth = 1.5 m
10	Minimum piling depth = 1.2 m	Minimum piling depth = 1.5 m
11	Minimum piling depth = 1.2 m	Minimum piling depth = 1.5 m
12	Minimum piling depth = 1.2 m	Minimum piling depth = 1.5 m
13	Minimum piling depth = 1.2 m	Minimum piling depth = 1.5 m
14	Minimum piling depth = 1.2 m	Minimum piling depth = 1.5 m
15	Minimum piling depth = 1.2 m	Minimum piling depth = 1.5 m



KEY PLAN

Legend



Minimum ramming depth

REFERENCE

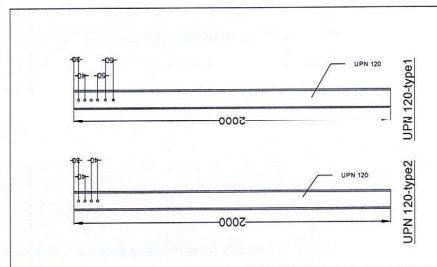
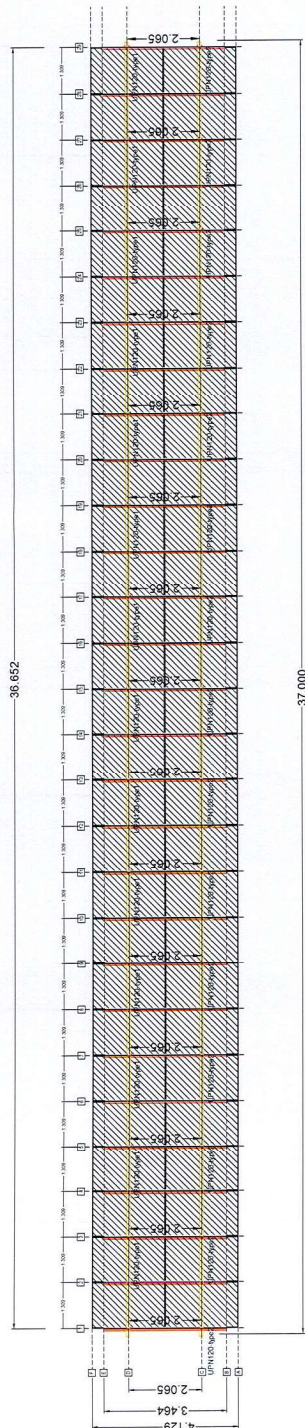
REFERENCE. TITLE

NOTES

ALL DIMENSIONS ARE IN m.

LEGEND

REV. DATE	DESCRIPTION	DESIGN	CHECKED	APPROVED	DATE
00	10/04/2025	DESIGN	CHECKED	APPROVED	10/04/2025
Client:	TOUS STADT CO. CONSULTING ENGINEERS				
Consultant:	TOUS STADT CO. CONSULTING ENGINEERS				
Contractor:	MOHAMMAD SHARAH CO.				
Sub-Contractor:	Sama Energy Pwllar				
Project:	20MW Solar Power Plant (MAHAYAT)				
Title:					
DOC NO.:					
SCALE	FIT	SIZE	SHEET	FORMAT	REV.
		A3	17 OF 19	DWG	01



Legend

47891

TSC

Tous Start Consulting Engineers

Tous Start Co.


Sign: _____

Date: _____

APPROVED

This Approval Does Not Relieve The Contractor of Contractual Responsibilities

NO.	10/04/2025	FIRST REVIEW OF DRAWINGS	A	HAQIMULHAQUE	HAQIMULHAQUE	F	MOHAMMAD	H	MOHAMMAD
REV.	DATE	DESCRIPTION	DESIGN	DESIGN	DESIGN	CHECKED	APPROVED		





Samin Energy Pvt. Ltd.

TOUS START CO.

Contractor

MOHAMMAD SHARAF CO.

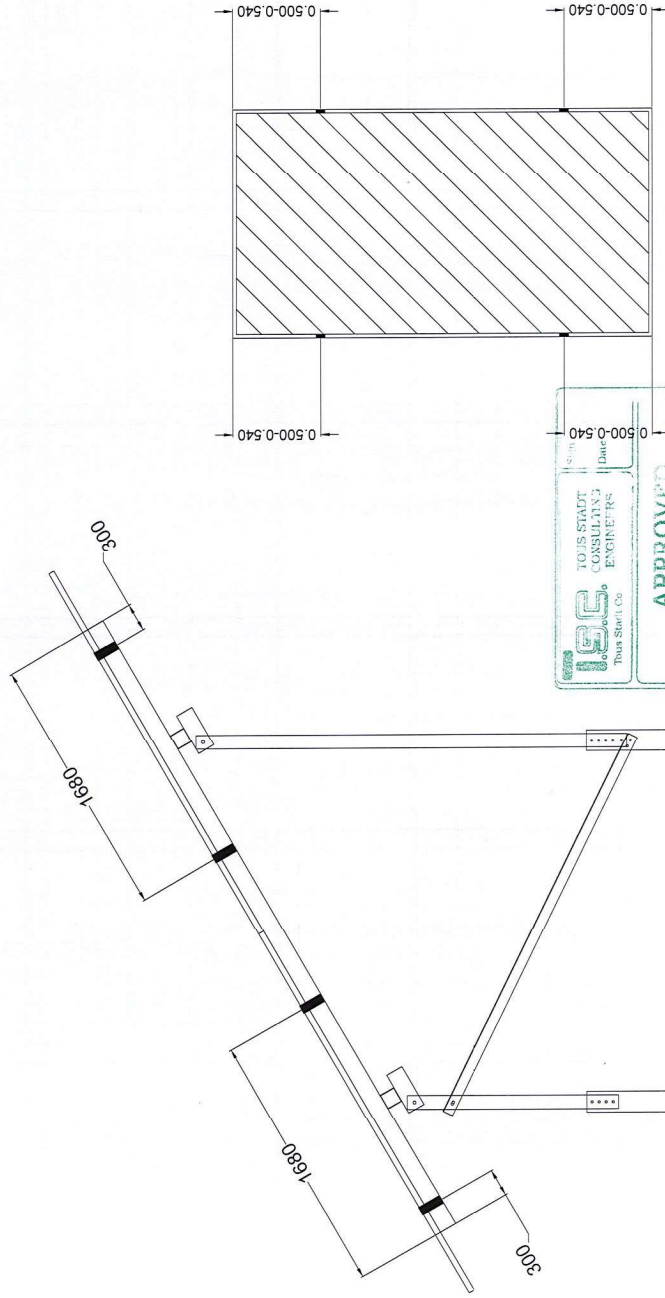
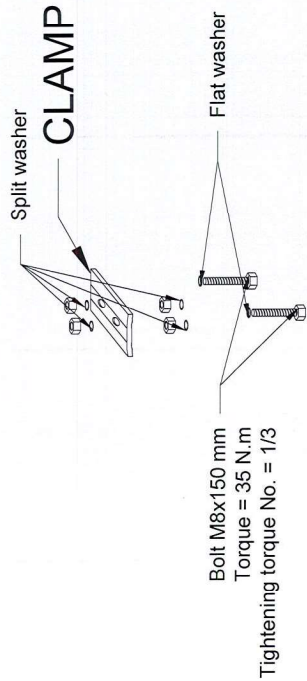
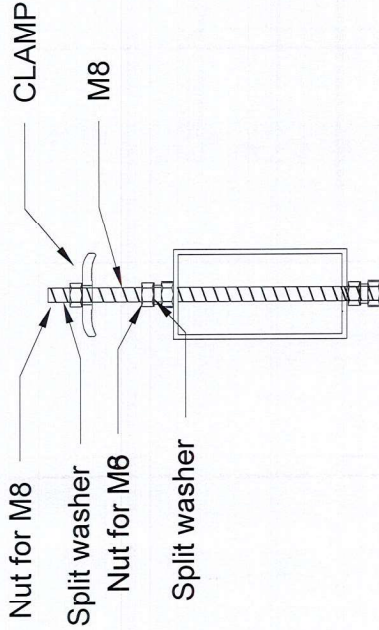
Sub-Contractor

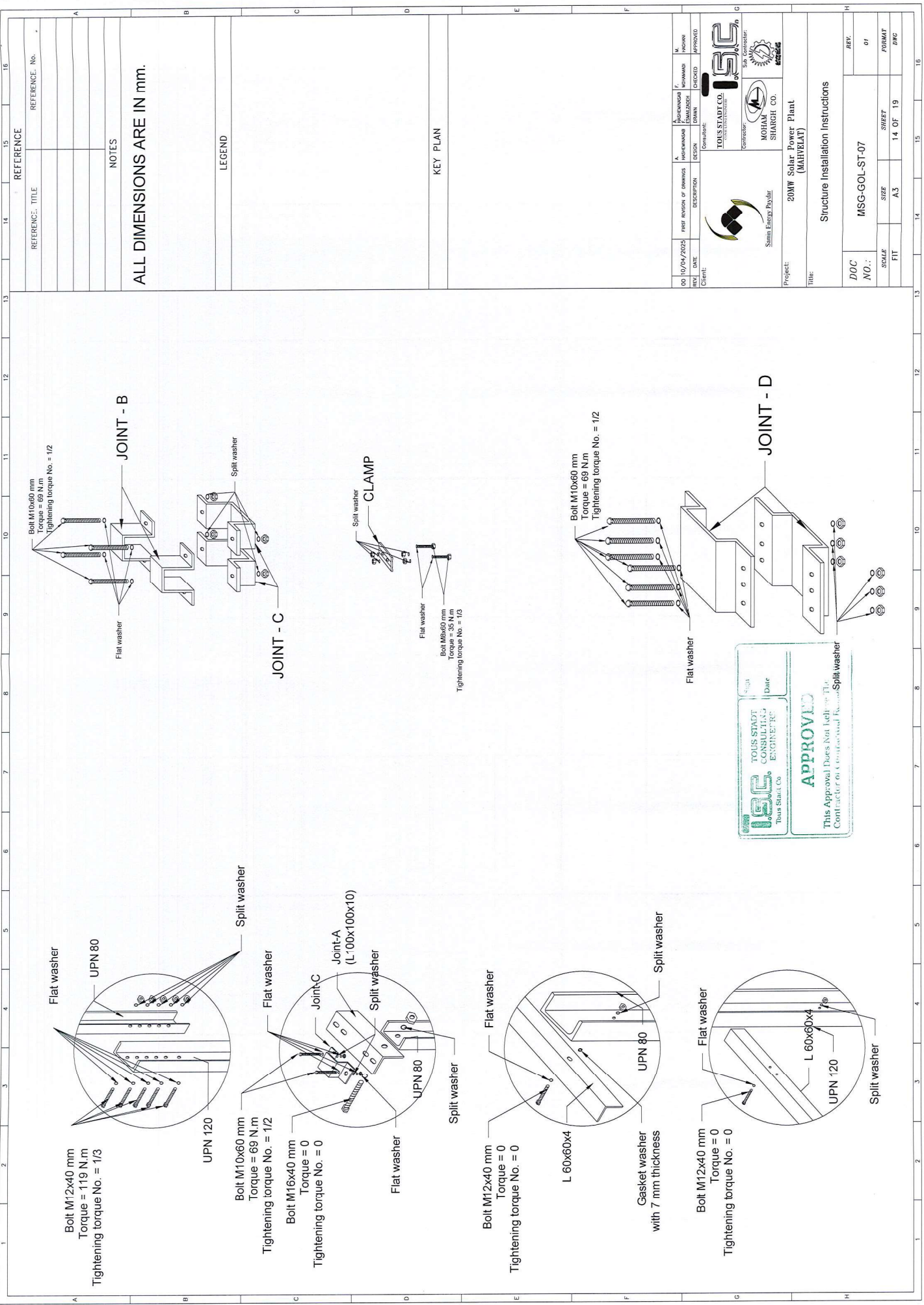
20MW Solar Power Plant
(MINERAL)

Ramming Details & Location


D/C NO. :	MSG-GOL-ST-09			REV.	01		
	SCALE	SIZE	SHEET	FORMAT	DWC		
FIT	A3	16 OF 19					

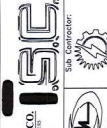



REFERENCE. TITLE		REFERENCE. No.	
REV. DATE		REV. DATE	
DESCRIPTION		DESCRIPTION	
DESIGN		DESIGN	
CHECKED		CHECKED	
APPROVED		APPROVED	
CONSULTANT		CONSULTANT	
TOUS START CO.		TOUS START CO.	
SUB-CONTRACTOR		SUB-CONTRACTOR	
MOHAMMAD SHARAH CO.		MOHAMMAD SHARAH CO.	
Sanaa Electric Power		Sanaa Electric Power	
Project:		Project:	
20MW Solar Power Plant		20MW Solar Power Plant	
Title:		Title:	
DOC NO.:		DOC NO.:	
REV. OF		REV. OF	
SCALE		SCALE	
FIT		FIT	
SHEET		SHEET	
15 OF 19		15 OF 19	
FORMAT		FORMAT	
DWG		DWG	




REFERENCE		REFERENCE No.	
REV.	DATE	DESCRIPTION	APPROVED
00	10/04/2025	FIRST REVISION OF DRAWING	
01		REVISION OF DRAWING	
02		REVISION OF DRAWING	
03		REVISION OF DRAWING	
04		REVISION OF DRAWING	
05		REVISION OF DRAWING	
06		REVISION OF DRAWING	
07		REVISION OF DRAWING	
08		REVISION OF DRAWING	
09		REVISION OF DRAWING	
10		REVISION OF DRAWING	
11		REVISION OF DRAWING	
12		REVISION OF DRAWING	
13		REVISION OF DRAWING	
14		REVISION OF DRAWING	
15		REVISION OF DRAWING	
16		REVISION OF DRAWING	

Client:  Sams Energy Pwayer

Consultant:  TSC

Contractor:  MOHAM SHARAH CO.

Sub-Contractor:  MOHAM SHARAH CO.

Project: 20MW Solar Power Plant (MAHVELAT)

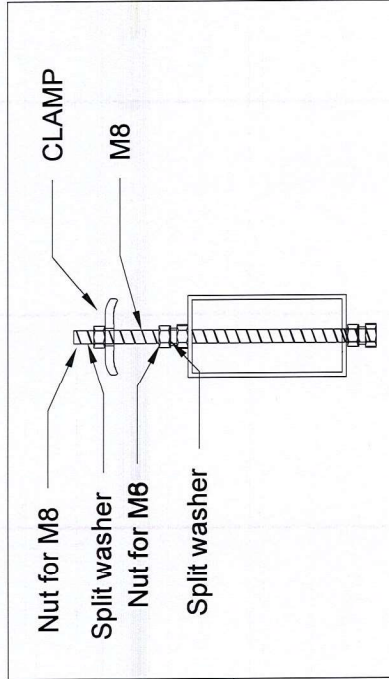
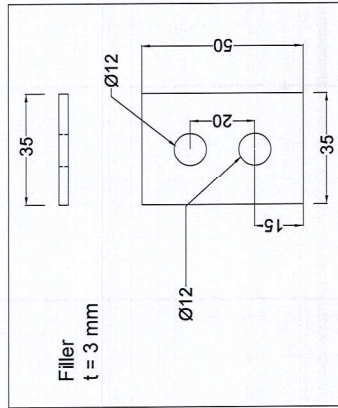
Title: Structure Installation Instructions

DOC NO.: MSG-GOL-ST-07

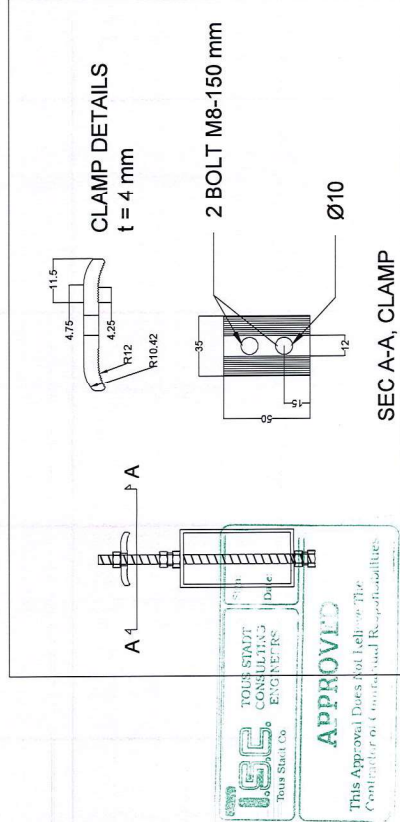
SCALE: A3

SHEET: 14 OF 19

FORMAT: DWG



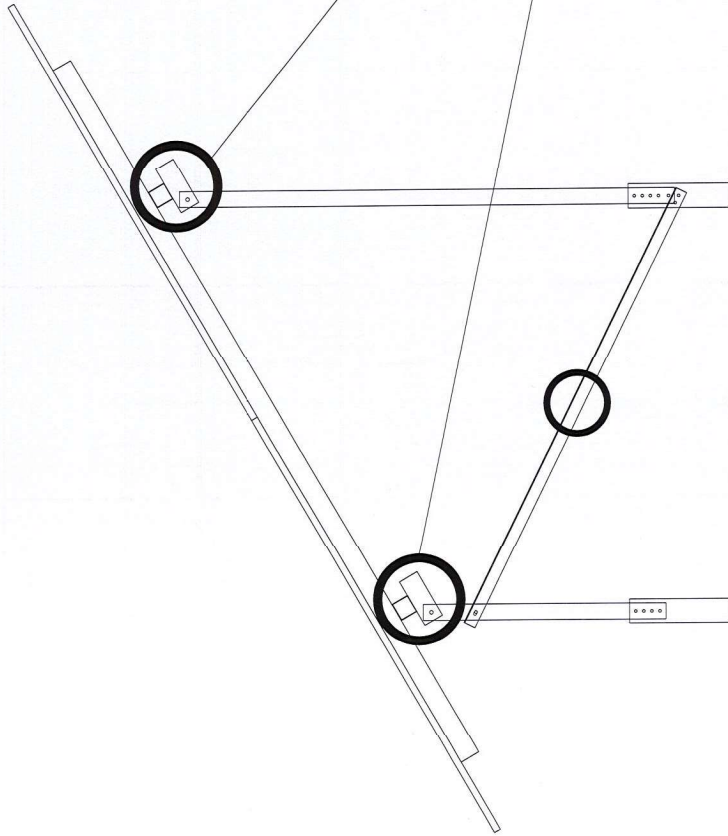
Pretension force for M10 = 34558 N
Torque = 69 N.m
Tightening torque No. = 1/2



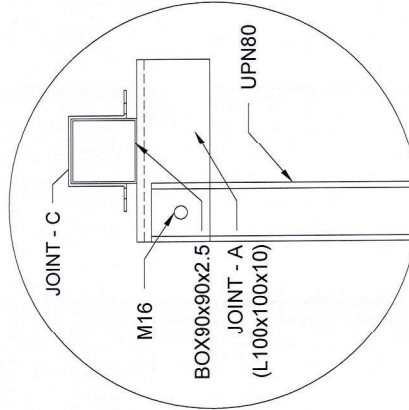
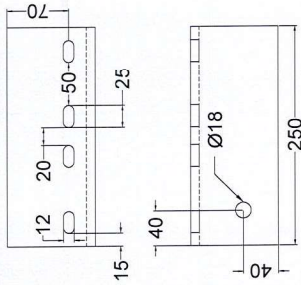
Pretension force for M8 = 22117 N
Torque = 35 N.m
Tightening torque No. = 1/3

																																																																																																																																																																																																																																																																																																																																																																																																																																																																																																																																																																																																																																																																																																																																																																																																																																																																																																																																																																																																																																																																																																																																																																																																																		</	
--	--	--	--	--	--	--	--	--	--	--	--	--	--	--	--	--	--	--	--	--	--	--	--	--	--	--	--	--	--	--	--	--	--	--	--	--	--	--	--	--	--	--	--	--	--	--	--	--	--	--	--	--	--	--	--	--	--	--	--	--	--	--	--	--	--	--	--	--	--	--	--	--	--	--	--	--	--	--	--	--	--	--	--	--	--	--	--	--	--	--	--	--	--	--	--	--	--	--	--	--	--	--	--	--	--	--	--	--	--	--	--	--	--	--	--	--	--	--	--	--	--	--	--	--	--	--	--	--	--	--	--	--	--	--	--	--	--	--	--	--	--	--	--	--	--	--	--	--	--	--	--	--	--	--	--	--	--	--	--	--	--	--	--	--	--	--	--	--	--	--	--	--	--	--	--	--	--	--	--	--	--	--	--	--	--	--	--	--	--	--	--	--	--	--	--	--	--	--	--	--	--	--	--	--	--	--	--	--	--	--	--	--	--	--	--	--	--	--	--	--	--	--	--	--	--	--	--	--	--	--	--	--	--	--	--	--	--	--	--	--	--	--	--	--	--	--	--	--	--	--	--	--	--	--	--	--	--	--	--	--	--	--	--	--	--	--	--	--	--	--	--	--	--	--	--	--	--	--	--	--	--	--	--	--	--	--	--	--	--	--	--	--	--	--	--	--	--	--	--	--	--	--	--	--	--	--	--	--	--	--	--	--	--	--	--	--	--	--	--	--	--	--	--	--	--	--	--	--	--	--	--	--	--	--	--	--	--	--	--	--	--	--	--	--	--	--	--	--	--	--	--	--	--	--	--	--	--	--	--	--	--	--	--	--	--	--	--	--	--	--	--	--	--	--	--	--	--	--	--	--	--	--	--	--	--	--	--	--	--	--	--	--	--	--	--	--	--	--	--	--	--	--	--	--	--	--	--	--	--	--	--	--	--	--	--	--	--	--	--	--	--	--	--	--	--	--	--	--	--	--	--	--	--	--	--	--	--	--	--	--	--	--	--	--	--	--	--	--	--	--	--	--	--	--	--	--	--	--	--	--	--	--	--	--	--	--	--	--	--	--	--	--	--	--	--	--	--	--	--	--	--	--	--	--	--	--	--	--	--	--	--	--	--	--	--	--	--	--	--	--	--	--	--	--	--	--	--	--	--	--	--	--	--	--	--	--	--	--	--	--	--	--	--	--	--	--	--	--	--	--	--	--	--	--	--	--	--	--	--	--	--	--	--	--	--	--	--	--	--	--	--	--	--	--	--	--	--	--	--	--	--	--	--	--	--	--	--	--	--	--	--	--	--	--	--	--	--	--	--	--	--	--	--	--	--	--	--	--	--	--	--	--	--	--	--	--	--	--	--	--	--	--	--	--	--	--	--	--	--	--	--	--	--	--	--	--	--	--	--	--	--	--	--	--	--	--	--	--	--	--	--	--	--	--	--	--	--	--	--	--	--	--	--	--	--	--	--	--	--	--	--	--	--	--	--	--	--	--	--	--	--	--	--	--	--	--	--	--	--	--	--	--	--	--	--	--	--	--	--	--	--	--	--	--	--	--	--	--	--	--	--	--	--	--	--	--	--	--	--	--	--	--	--	--	--	--	--	--	--	--	--	--	--	--	--	--	--	--	--	--	--	--	--	--	--	--	--	--	--	--	--	--	--	--	--	--	--	--	--	--	--	--	--	--	--	--	--	--	--	--	--	--	--	--	--	--	--	--	--	--	--	--	--	--	--	--	--	--	--	--	--	--	--	--	--	--	--	--	--	--	--	--	--	--	--	--	--	--	--	--	--	--	--	--	--	--	--	--	--	--	--	--	--	--	--	--	--	--	--	--	--	--	--	--	--	--	--	--	--	--	--	--	--	--	--	--	--	--	--	--	--	--	--	--	--	--	--	--	--	--	--	--	--	--	--	--	--	--	--	--	--	--	--	--	--	--	--	--	--	--	--	--	--	--	--	--	--	--	--	--	--	--	--	--	--	--	--	--	--	--	--	--	--	--	--	--	--	--	--	--	--	--	--	--	--	--	--	--	--	--	--	--	--	--	--	--	--	--	--	--	--	--	--	--	--	--	--	--	--	--	--	--	--	--	--	--	--	--	--	--	--	--	--	--	--	--	--	--	--	--	--	--	--	--	--	--	--	--	--	--	--	--	--	--	--	--	--	--	--	--	--	--	--	--	--	--	--	--	--	--	--	--	--	--	--	--	--	--	--	--	--	--	--	--	--	--	--	--	--	--	--	--	--	--	--	--	--	--	--	--	--	--	--	--	--	--	--	--	--	--	--	--	--	--	--	--	--	--	--	--	--	--	--	--	--	--	--	--	--	--	--	--	--	--	--	--	--	--	--	--	--	--	--	--	--	--	--	--	--	--	--	--	--	--	--	--	--	--	--	--	--	--	--	--	--	--	--	--	--	--	--	--	--	--	--	--	--	--	--	--	--	--	--	--	--	--	--	--	--	--	--	--	--	--	--	--	--	--	--	--	--	--	--	--	--	--	--	--	--	--	--	--	--	--	--	--	--	--	--	--	--	--	--	--	--	--	--	--	--	--	--	--	--	--	--	--	--	--	--	--	--	--	--	--	--	--	--	--	--	--	--	--	--	--	--	--	--	--	--	--	--	--	--	--	--	--	--	--	--	----	--

Pretension force for M10 = 34558 N
Torque = 69 N.m
Tightening torque No. = 1/2



JOINT - A
(L100x100x10)



KEY PLAN

ALL DIMENSIONS ARE IN mm.





LEGEND

REFERENCE

REFERENCE. TITLE

REFERENCE. No.

NOTES

REV.	DATE	DESCRIPTION	DESIGN	CHECKED	APPROVED
00	10/04/2025	FIRST EDITION OF DRAWING	DESIGN	CHECKED	APPROVED
Client:  Swin Energy Pty Ltd					
Consultant:  TSC TOUS STADT CONSULTING ENGINEERING					
Contractor:  MOHAM SHARGH CO.					
Sub-Contractor:  MOHAM SHARGH CO.					

Project:	20MW Solar Power Plant (MANVELAT)
Title:	Structure Details Drawing

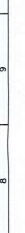
DOC NO.:	MSG-GOL-ST-04	REV.	01
SCALE	A3	SHEET	12 OF 19
FIT		FORMAT	DWG

14	15	16
REFERENCE		



--	--

6	5
---	---



0	1
---	---

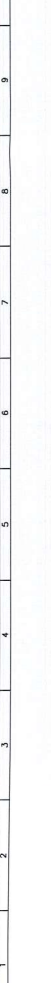
	6	7
--	---	---

3	4
---	---

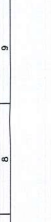
	z	
--	-----	--



REFERENCE			
14	15	16	
REFERENCE. TITLE	REFERENCE. No.		



5

[illegible]

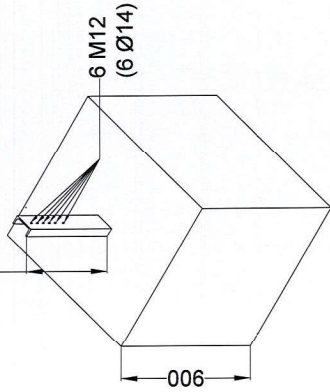
5	
---	--



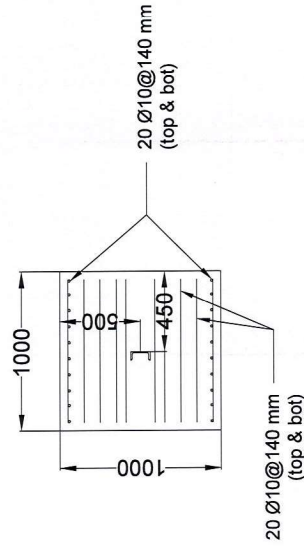
6	
---	--

1	2	3	4	5	6	7	8	9	10	11	12	13
---	---	---	---	---	---	---	---	---	----	----	----	----

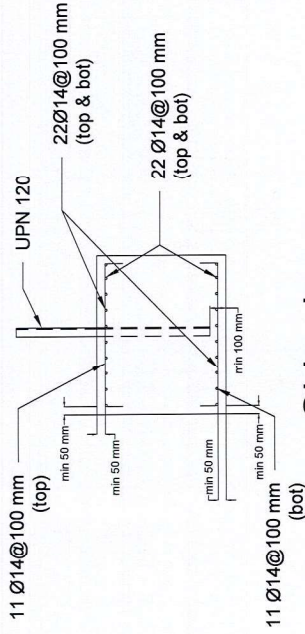
Free length = 500mm



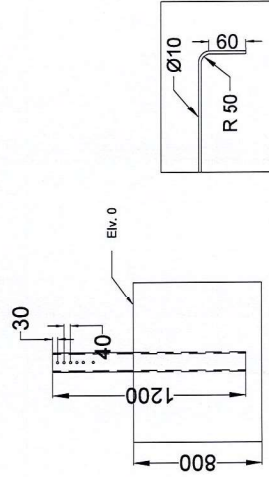
3D view



Plan view





Side view

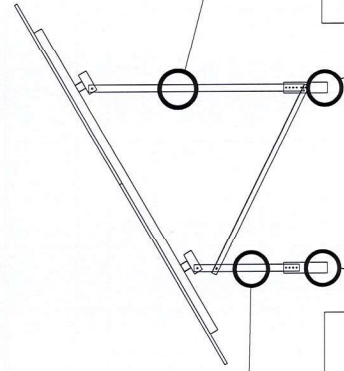
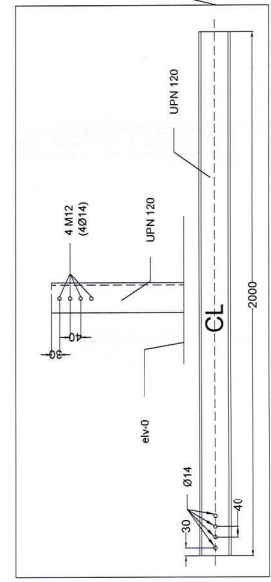
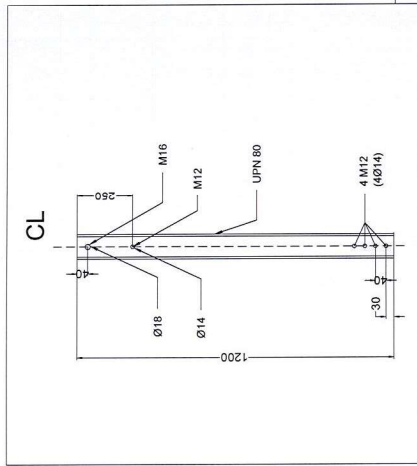
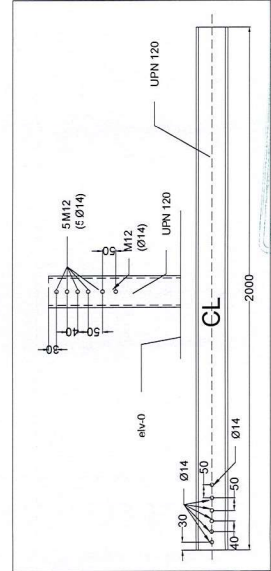
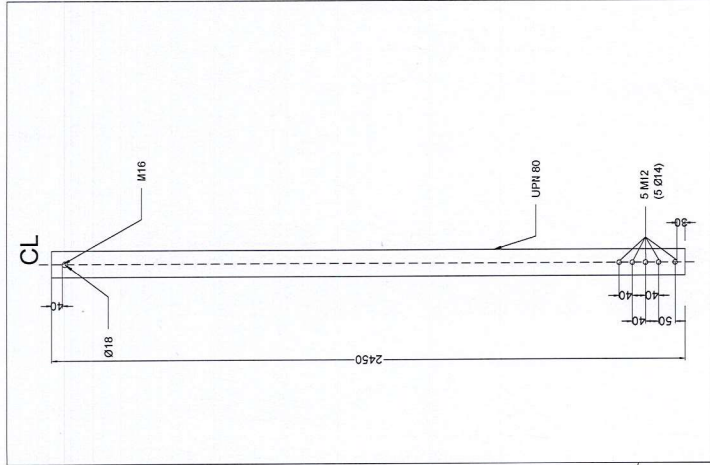


Rebar anchorage detail

UPN120 detailing
 $f_c = 30 \text{ MPa}$, All rebar,
Cement type: II, $W/C = 0.45$



REFERENCE		13	14	15	16
REFERENCE TITLE	REFERENCE No.				
NOTES					
ALL DIMENSIONS ARE IN mm.					
LEGEND					
KEY PLAN					
Client: 		REV. NO.	DATE	DESCRIPTION	DESIGN
Consultant: 		REV. NO.	DATE	DESCRIPTION	DESIGN
Project: 20MW Solar Power Plant (MAYALAT)		REV. NO.	DATE	DESCRIPTION	DESIGN
Title: Cast in Place Pile		REV. NO.	DATE	DESCRIPTION	DESIGN
DOC NO.: MSG-GOI-ST-02	REV. 01	REV. NO.	DATE	DESCRIPTION	DESIGN
SHEET 09 OF 19	FORMAT DWP	REV. NO.	DATE	DESCRIPTION	DESIGN



ALL DIMENSIONS ARE IN mm.

LEGEND

KEY PLAN

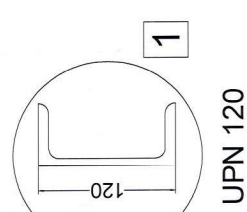
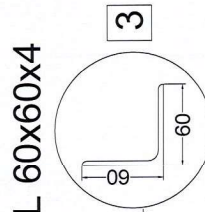
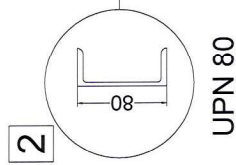
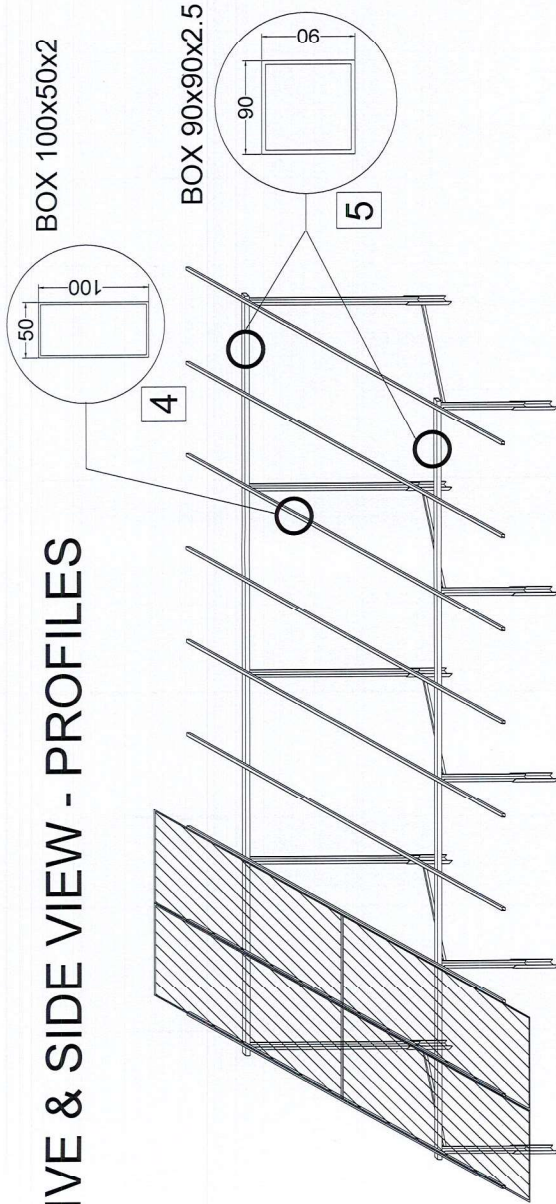
REFERENCE		REFERENCE. No.	
REV.	DATE	DESCRIPTION	DESIGN
00	10/04/2025	FIRST EDITION OF DRAWINGS	DESIGN
01		REVISION	DESIGN
02		REVISION	DESIGN
03		REVISION	DESIGN
04		REVISION	DESIGN
05		REVISION	DESIGN
06		REVISION	DESIGN
07		REVISION	DESIGN
08		REVISION	DESIGN
09		REVISION	DESIGN
10		REVISION	DESIGN
11		REVISION	DESIGN
12		REVISION	DESIGN
13		REVISION	DESIGN
14		REVISION	DESIGN
15		REVISION	DESIGN
16		REVISION	DESIGN

Client:	Samir Energy Pty Ltd	Consultant:	TOUS STANT CONSULTING ENGINEERS	Contractor:	MOHAMMAD SHARAH CO.	Sub-Contractor:	MOHAMMAD SHARAH CO.
Project:	20MW Solar Power Plant (MAHVELAT)	Structure Details Drawing					
DOC NO.:	MSG-GOL-ST-04	SHEET	07 OF 19	FORMAT	PDF		
SCALE	A3	FIT					

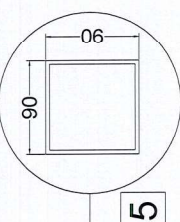
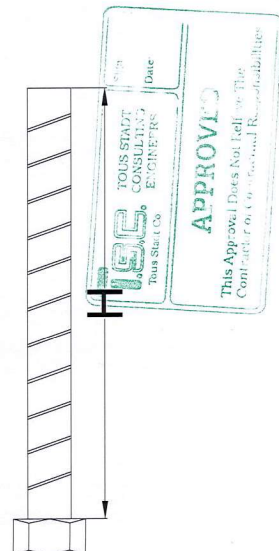


COLUMNS - DETAILS & DIM

PERSPECTIVE & SIDE VIEW - PROFILES



Bolt	Grade	H-min (mm)
M8	8.8	60
M10	8.8	60
M12	10.9	40
M16	8.8	40

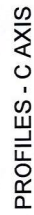
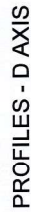
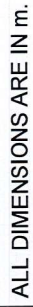


REFERENCE		REFERENCE NO.	
REV.	DATE	DESCRIPTION	APPROVED
00	10/04/2025	FIRST EDITION OF DRAWING	
Client:		MOHAMMAD SHARAH CO.	MOHAMMAD SHARAH CO.
Consultant:		TOUS STADT CO.	TOUS STADT CO.
Contractor:		MOHAMMAD SHARAH CO.	MOHAMMAD SHARAH CO.
Sub-Contractor:		MOHAMMAD SHARAH CO.	MOHAMMAD SHARAH CO.
Project:		20MW Solar Power Plant (MAHVELAT)	
Title:			
DOC NO.:			
SCALE:		FIT	
SIZE:		A3	
SHEET:		06 OF 19	
FORMAT:		DWG	

ALL DIMENSIONS ARE IN mm.


LEGEND

KEY PLAN




00	10/04/2025	FIRST REVISION OF DRAWINGS	A. HACHIMUNGAS F. HACHIMUNGAS	F. MOHAMMAD HACHIMI	M. HACHIMI
REV.	DATE	DESCRIPTION	DESIGN	CHECKED	APPROVED

Client: _____ Consultant: _____



TOUSTADT CO.
CONSULTING ENGINEERS

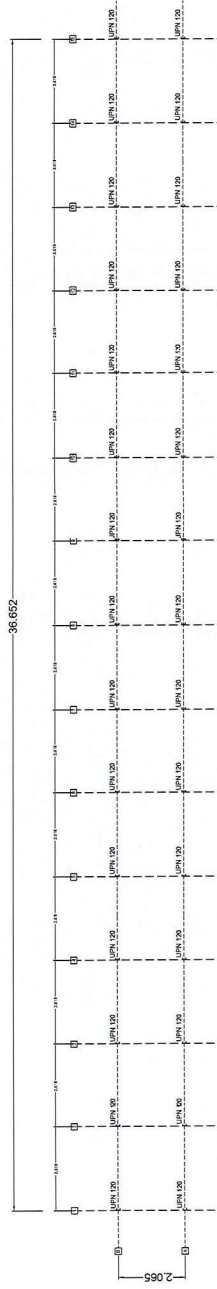
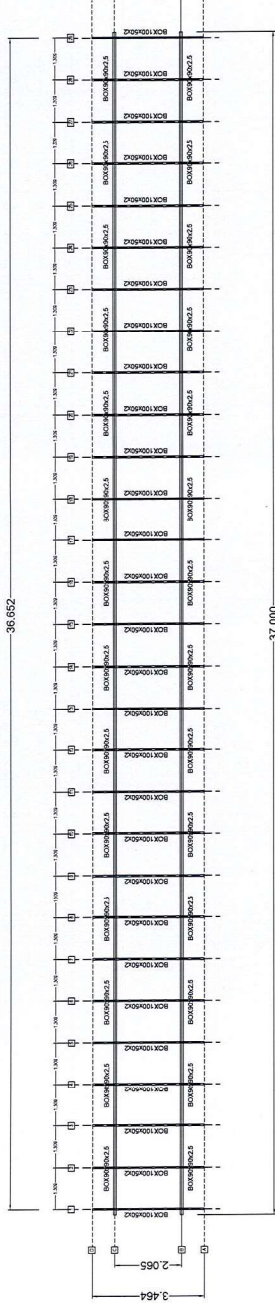
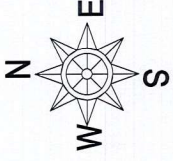
Samir Energy Paydar
Contractor: MOHAM SHARH CO.
Sub Contractor: 

Project:	20MW Solar Power Plant (MAHVELAT)
----------	--------------------------------------

1100:	
-------	--

<i>DOC</i>			<i>REV.</i>
<i>NO.:</i>	<i>01</i>		

SCALE	SIZE	SHEET	FORMAT
FIT	A3	04 OF 19	DWG

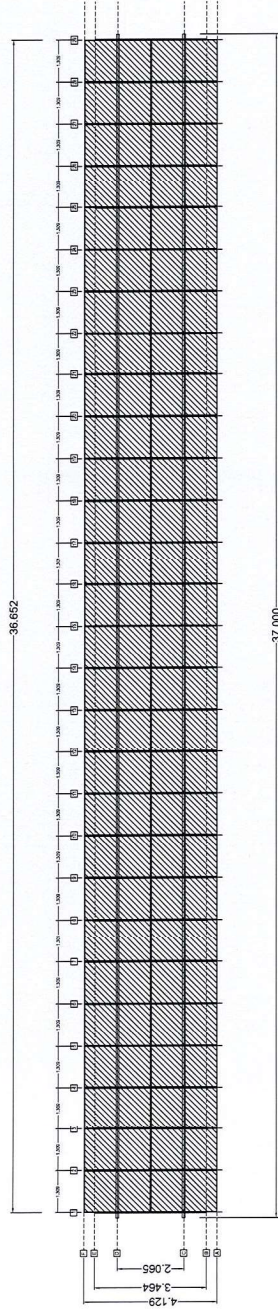
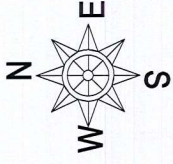


PROFILES - BEAMS & PILES

PROFILES - BEAMS & PILES



REFERENCE		REFERENCE No.	
REV	DATE	DESCRIPTION	BY
01	10/04/2025	FIRST REVISION OF BEAMS & PILES	MOHAMMAD SHARAF
Client:		Contractor:	MOHAMMAD SHARAF
Project:		20MW Solar Power Plant (MAHVELAT)	
Site:		SOUTH EAST AFRICA	
Scale:		A3	
Sheet:		03 OF 19	
Format:		DWG	
Rev:		01	



PLAN VIEW

REFERENCE. TITLE	REFERENCE. No.
ALL DIMENSIONS ARE IN m.	
NOTES	
LEGEND	
KEY PLAN	

NO.	DATE	DESCRIPTION	REVISIONS	APPROVED	DATE
01	10/04/2020	ISSUE FOR PERMIT	1	APPROVED	

CLIENT	DESIGNER	CONTRACTOR	ENGINEER	DATE
Samir Energy Project	TOUS STADI CONSULTING ENGINEERS	MOHAMMAD SHARAH CO.	MOHAMMAD SHARAH CO.	10/04/2020

PROJECT	TITLE
20MW Solar Power Plant (MAHYELAT)	Module Arrangement on Table

DOC NO.	SIZE	SHEET	FORMAT
MSG-GOL-ST-06	A3	02 OF 19	DWG

Structure Details Drawing

20 MW PV Power-Station

Samin Mahvelat



APPROVED ۰۴ ۰۷ ۲۲

This Approval Does Not Release The Contractor of Their Technical Responsibilities

مهندس محسن ابراهیم زاده
درگاه اقامت دارد

15	14	13	12	11	10	9	8	7	6	5	4	3	2	1
REFERENCE		REFERENCE No.												
REFERENCE TITLE														
NOTES		ALL DIMENSIONS ARE IN m.												
LEGEND														
KEY PLAN														
Client:		TOS-STADT CONSULTING ENGINEERS TOS-STADT Co.												
Project:		20MW Solar Power Plant (MAHVELAT)												
Title:														
DOC NO:		REV.												
SCALE		SHEET												
FIT		A3 01 OF 19												
FORMAT		DWG												